

07.Handling / Lift Plugs

1. Handling plugs are essential in order to run flush and near flush type connections.
2. Handling Plugs and Lifting Plugs are tubular accessories used on flush and semi flush integral connections. They are a pin threaded steel plug provided with holes in the upper flange. The upper flange being of such a design as to allow the face of a side door elevator to abut the flange with enough overlap to allow the pipe or string to be lifted. The thread finish of the plugs is generally phosphate.
3. Although the physical appearance of both types of plug are similar, they are designed for different purposes:

HANDLING PLUGS

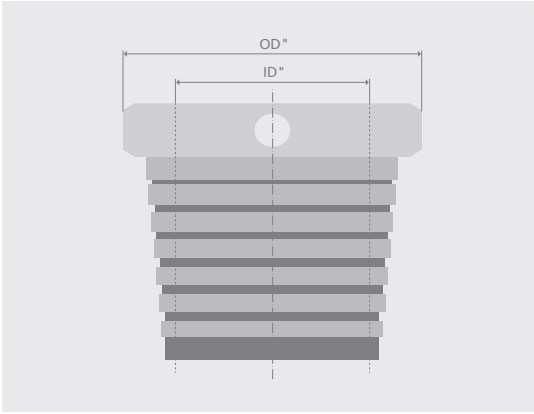
1. Are designed to withstand the weight of a single pipe or a stand of up to 3 pipe maximum.
2. Are used for handling the pipe and protecting the box end connection as the pipe is brought through the V-door and into the derrick.
3. The maximum load capacity should be stamped on the top of the flange. If no maximum load capacity is indicated the device should be used to lift no more than 1 joint.

LIFTING PLUGS

1. Are designed to withstand the weight of the whole tubular string.
2. The maximum load capacity must be stamped on the flange. If no rating is stamped or is illegible, it should be used to lift no more than 1 joint.
3. The maximum lift capacity stamped on the plug should never be exceeded.

LOAD RATED HANDLING PLUGS

1. These are a 'hybrid' design which although not rated to the same lift capacity as the connection can lift a load far in excess of a handling plug.
2. Tenaris generally manufacture load rated handling plugs.
3. Any genuine Tenaris designed and manufactured handling / lift plug will have a unique part number and maximum load rating hard stamped on the flange. If no load rating is indicated these should be used to lift no more than 1 joint.
4. The load rating stamped on any Tenaris plug should never be exceeded.



HANDLING PLUG

The complete removal of all storage compounds is imperative.

- Plugs are designed with a low interference thread and with no metal seals. This allows them to be installed in the box end by hand and tightened with the aid of a steel bar inserted through the flange holes.

6. Prior to running, check the condition and fit of the plugs, ensure 3 or 4 are available. If a plug does not make up correctly to a connection check the plug and connection for thread damage, debris on the threads, mashed box or box ovality.
7. Special attention should be paid to connections that are not interchangeable for the same OD and different weight, for example TenarisHydril Blue® Near Flush. For these cases the handling and lifting plugs are not interchangeable. Also be aware that some connections have a limited same size different weight interchange capability which will also apply to the interchange capability of the plugs.
8. Interchange capability can be verified in the product's data sheet.
9. Visual inspection of plug threads and box end is mandatory before each make up.
10. Ensure the handling / lift plug threads are completely clean and free of all contamination.
11. In the particular case of Wedge connections in chrome or CRA grades, it is recommended that handling / lifting plugs and all accessories (cement head, circulating swage etc) are peened and moly-coated prior to use.
12. Make up the plug by hand and then snug up tight with the assistance of a bar inserted into the holes of the flange.
13. It is not necessary to apply thread compound to TenarisHydril manufactured handling plugs, especially if running connections with Dopeless® or Dopeless® 3.0/3.1 technologies.

14. If doubt exists as regards the correct make up position of the plug, check the maximum gap from table below, any plug not conforming to the indicated final make up position cannot be used:

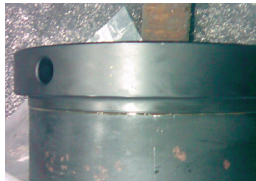
CONNECTION	MAXIMUM GAP
BLUE® NF*	0.276" (7mm)
BLUE® NF**	0.039" (1mm)
WEDGE 511® / 521®	0.512" (13mm)
WEDGE 513® / 523®	0.630" (16mm)
WEDGE 623® / 613™	0.630" (16mm)
WEDGE 624®	0.630" (16mm)
WEDGE 625®	0.354" (9mm)
WEDGE 441™	0.425" (11mm)
MACII™	0.039" (1mm)
SLX®	0.118" (3mm)
BIG FLUSH	0.039" (1mm)

*TSH BLUE® NF STAMPED: TSH-AD-HP

**TSH BLUE® NF NOT STAMPED: TSH-AD-HP



STAMPED TSH-AD-HP



NOT STAMPED



TSH W513/523/623/613



TSH MACII / SLX

HANDLING AND CARE OF PLUGS

1. Correct handling practices and sound judgment must be used at all times to maintain the rated Lift capacity of any plug.
2. Damaged plugs should be inspected by a qualified Tenaris Field Service Representative prior to further use.
3. The ID of the plugs must not be bored out as this will reduce the rated lift capacity of the plugs.
4. The OD of the plugs must not be turned down as this will also reduce the rated lift capacity of the plugs.
5. During lifting operations, if the plug is subjected to heavy impact loading, use of the plug should be suspended until an inspection is performed.
6. Particular care must be taken when using handling plugs and side door elevators. Ensure the elevators are not in contact with the plug whilst the pipe is being made up as this will back the plug out of the connection.
7. Many people treat handling / lift plugs as they would protectors, this is bad practice.
8. When rotating the plugs from drill floor to pipe area care should be taken to ensure the plugs are not damaged, these are machined parts and as such should be treated like any pipe connection.
9. Additionally, care should be taken in preventing the plugs from becoming contaminated with grit or debris, if this occurs the plugs must be thoroughly cleaned prior to being made up to a connection.

10. Tenaris will neither endorse nor guarantee any handling or lift plug designed and manufactured by any other company. Although these accessories may have a genuine TenarisHydril connection machined upon them the design and lift capabilities of the item are unknown to Tenaris therefore these items are used at the user's own discretion. Any query regarding the lifting capability of such items should be directed to the original manufacturer.

Tenaris has produced this manual for general information only. While every effort has been made to ensure the accuracy of the information contained within this publication, Tenaris does not assume any responsibility or liability for any loss, damage, injury resulting from the use of information and data herein. Tenaris products and services are only subject to the Company's standard terms and Conditions or otherwise to the terms resulting from the respective contracts of sale, services or license, as the case may be. The information in this publication is subject to change or modification without notice. For more complete information please contact a Tenaris's representative or visit our website at www.tenaris.com.
©Tenaris 2022. All rights reserved.